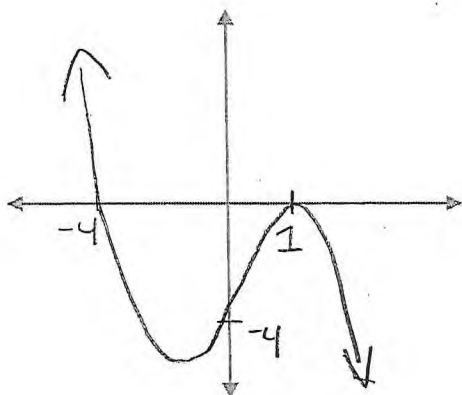


3.4 Graphing Polynomials Outcome R12

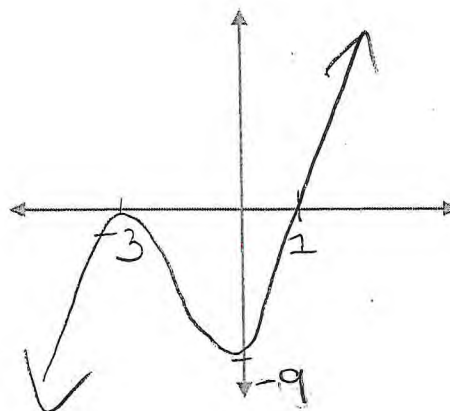
SOLUTIONS

Sketch the following functions, clearly indicating the y-intercept and the x-intercept(s):

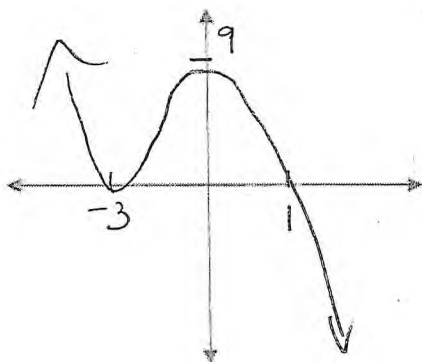
1. $g(x) = -(x - 1)^2(x + 4)$



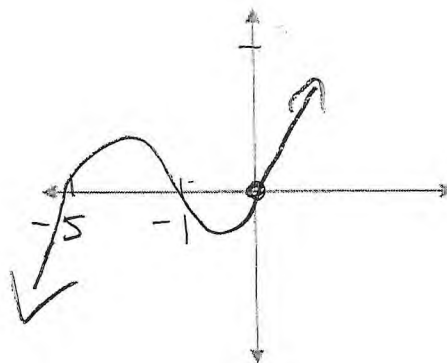
2. $y = (x - 1)(x + 3)^2$



3. $y = -(x - 1)(x + 3)^2$

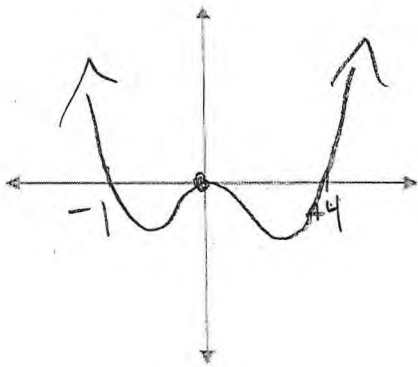


4. $y = x(x + 1)(x + 5)$

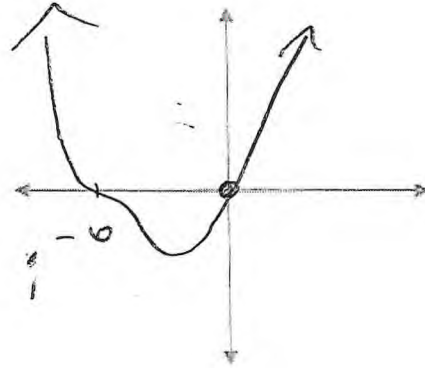


3.4 Graphing Polynomials Outcome R12

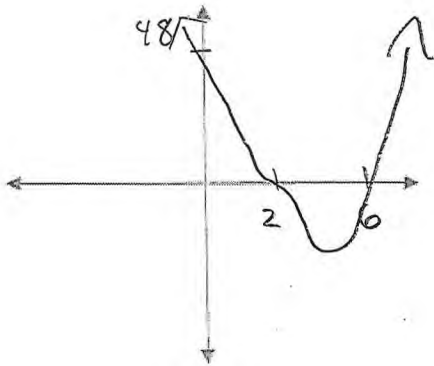
5. $y = x^2(x - 4)(x + 1)$



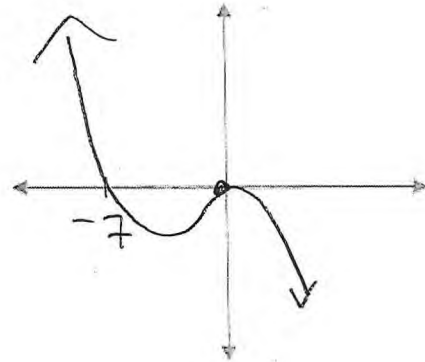
6. $f(x) = x(x + 6)^3$



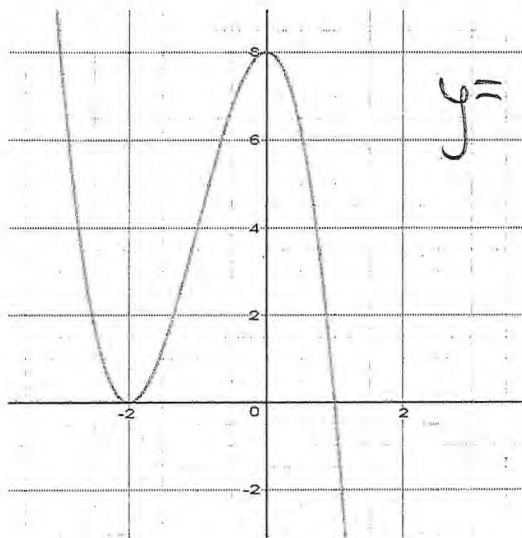
7. $f(x) = (x - 6)(x - 2)^3$



8. $f(x) = -x^2(x + 7)$



9. Write an equation that represents the graph of the polynomial below.



$$y = -2(x + 2)^2(x - 1)$$